

BLOCK 6 FIVE ACRE PLAT A

9-3

LOTS 6,7 & 8

IN OGDEN CITY

SCALE 1" = 100'

TAXING UNIT: 25

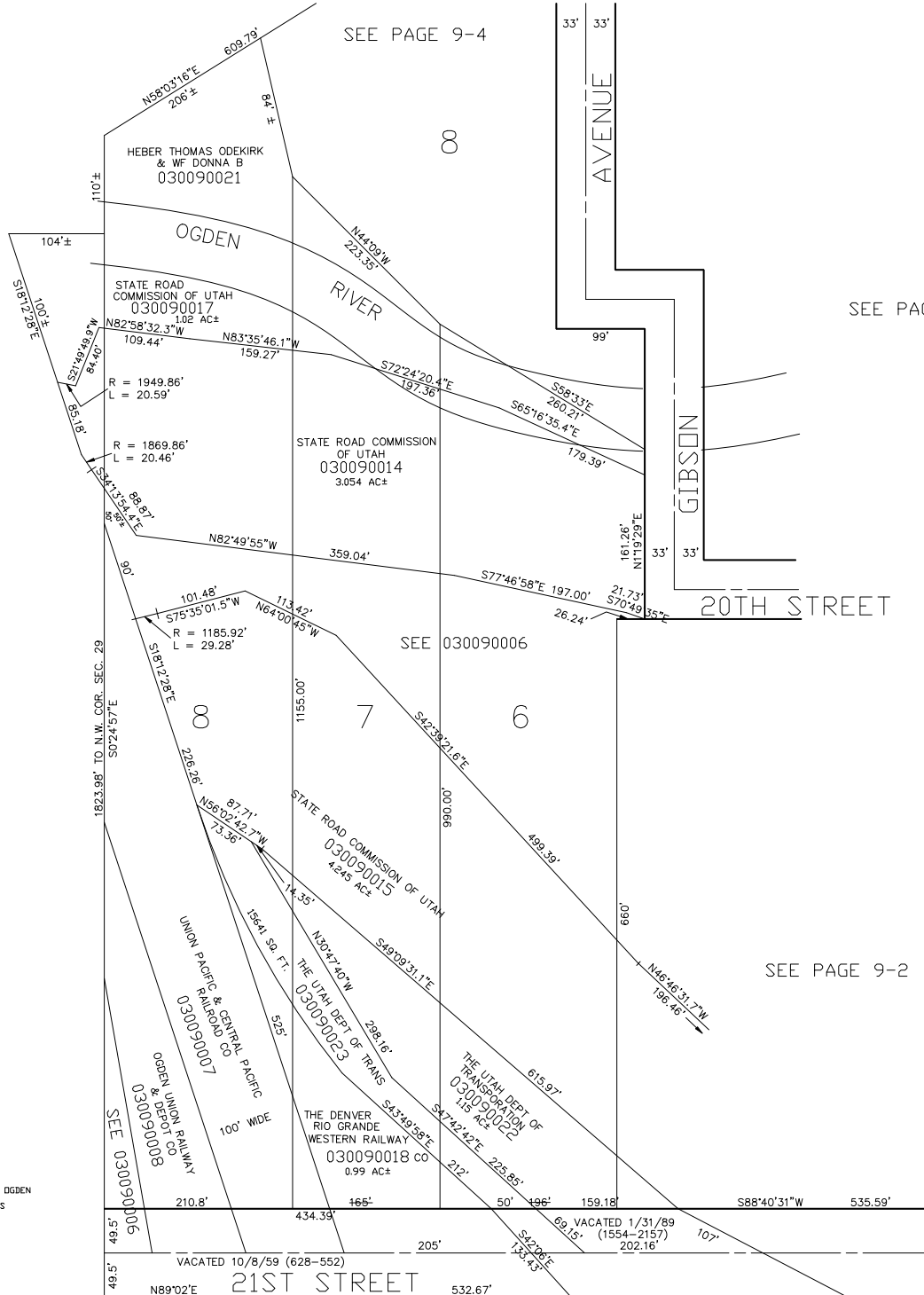
SEE PAGE 9-4

SEE PAGE 15

SEE BOOK 14
PAGE 10-1

SEE PAGE 9-2

NOTE: ALL MEASUREMENTS ARE FROM OGDEN
CITY ENGINEERING DEPT. PLATS



SEE PAGE 5

MTT 05-96